

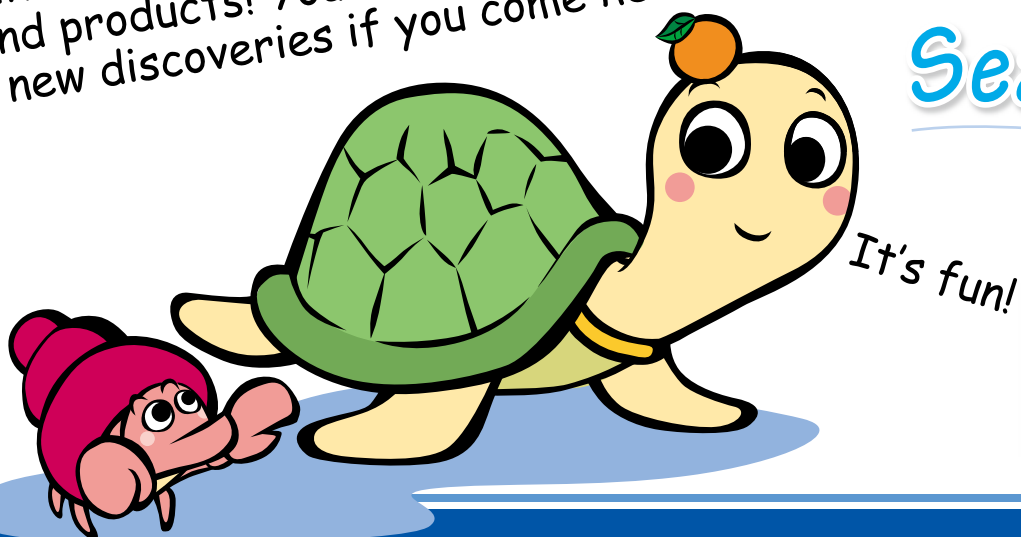
Kiho Town

KIHO GUIDE MAP



Kiho Town is full of attractive spots and products! You can possibly make new discoveries if you come here.

Slow Travels of Sea turtles



The Kame Rangers
of Kiho Town



Your trip starts here...

Come Here to See Real Sea Turtles!

A major base for the protection of sea turtles and the promotion of educational activities

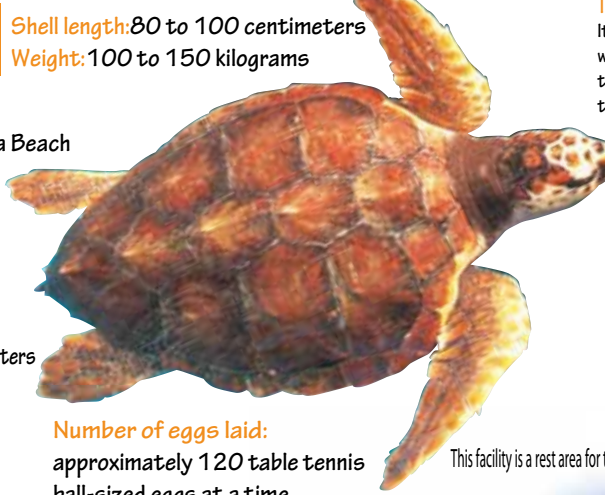
Kiho Town Sea Turtle Park

Information on loggerhead sea turtles

Egg-laying site: Ida Beach
Egg-laying period: late May to August

Size of eggs:
about 40 to 45 millimeters in diameter

Number of eggs laid:
approximately 120 table tennis ball-sized eggs at a time



Tears sea turtles shed when laying eggs
It looks as if sea turtles were shedding tears while laying eggs. That is simply because they are trying to excrete unnecessary salt they got in the sea from their bodies.

Birth of baby sea turtles: Are they male or female?
Whether laid eggs hatch into male or female sea turtles depends on the temperature of the sand on the egg-laying site. The number of males and females is roughly equal at 29 degrees centigrade while the number of females increases at 30 degrees centigrade or higher and decreases at 28 degrees centigrade or lower.

28 degrees centigrade or lower	29 degrees centigrade	30 degrees centigrade or higher
The number of males increases.	The number of males and females is roughly equal.	The number of females increases.

Local Specialty Store
This facility is a rest area for travelers. A wide variety of local products of Kiho Town are available for sale.

Kiho Town Sea Turtle Park E-5 **Facility Information**

Opening Hours and Holidays
[Fureai Park] 9:00 to 17:00 ※Open 365 days a year
[Admission] Free of charge
[Local Specialty Store]
November to February: 8:30 to 18:00
March to October: 8:30 to 19:00
※Open 365 days a year
[Parking Lot] Available for 44 standard-sized vehicles and 5 large-sized vehicles

Contact Information
●Roadside Station "Kiho Town Sea Turtle Park"
568-7 Ida, Kiho Town, Minamimuro County, Mie Prefecture 519-5711
[Fureai Park] Phone: 0735-32-3686
[Local Specialty Store] Phone: 0735-33-0300 Fax: 0735-33-0301
●Kiho Town Planning and Coordination Division
324 Udono, Kiho Town, Minamimuro County, Mie Prefecture 519-5701
Phone: 0735-33-0334 Fax: 0735-32-1102



Why do sea turtles come here when they lay eggs?

That's because the sea here is so beautiful!



Local products of Kiho Town are available for sale at the Local Specialty Store in the park.

Visitors can observe sea turtles and other marine creatures swimming in the pool.

There are lots of adorable goods related to sea turtles.



Visit Kiho Town to Enjoy Sightseeing and Leisure Activities!

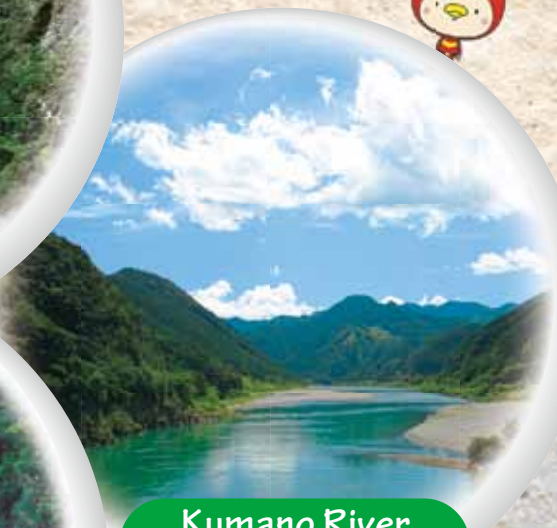
Make Lots of Wonderful Memories on Your Visit to Sightseeing Spots in the Middle of Nature.



Shichirimihama Beach F-5
UNESCO World Heritage Site



Konouchi Shrine F-4



Kumano River F-4
UNESCO World Heritage Site



Hisetsu Falls F-2



Local Museum "Midori no Sato" E-4



Hiraio Yakushi Temple C-4

Eggs hatch into baby sea turtles about 60 days after they are laid.



Mifunejima Island G-3
UNESCO World Heritage Site



Cherry blossoms in Chuo Park G-4

Now it's time to set out for the ocean!





Flower Road

Kiho Town is full of attractive cherry blossom viewing spots, such as "Flower Road" with a splendid tunnel of cherry blossoms and "Ozato Water Park" with full-blown cherry blossoms reflected on the surface of water.

Spring



Ozato Water Park

This park has a natural swimming pool made by damming the Onodani River that is famous for its very limpid water. Visitors can enjoy swimming and observe the mode of life of creatures such as minnows in nature.

Summer



Kiho Port Festival
Kuroshio Current Experience

Autumn

You can pack as many mandarin oranges as you like.

The Kiho Port Festival is a great event held annually in mid-October in Kiho Town. Professional singers and comedians as well as amateur entertainers join the festival to give live performances in front of a large audience. Moreover, agricultural and seafood products from Kiho Town are available for sale, and some special events offer unique experiences to the participants. In short, you can fully enjoy four different things, namely "Viewing," "Playing," "Eating" and "Buying" at the same time if you take part in the festival.



Illumination Festival in Kiho

The Illumination Festival is a fantastic event held every winter in Kiho Town. From December to early January, the space in front of the Local Museum is beautifully illuminated by about 200,000 light bulbs to create a magical atmosphere.

Winter

Sacred Sites and Pilgrimage Routes in the Kii Mountains

Tours to Experience the Kumano Kodo

It is Definitely Fun to Walk Slowly on the Old Pilgrimage Routes
Enjoying the Landscapes and Historical Sites Around.



Walking Route along the Coast Hama Kaido Route

About 7 kilometers 2 hours 40 minutes

The Kumano Kodo Iseji Route is full of slopes because it has lots of mountain passes. However, the Hama Kaido Route is quite exceptional: it is a flat road that connects Shichirimihama Beach famous as a long sandy beach and the Kumano River via a hill with a view. You can try this route if you head to the Kumano River.



Yokote Enmei Jizo

Bikishi-sama

Kiho Town Sea Turtle Park

Ida no Ichirizuka (milestone)

Yokote Enmei Jizo

Okimi Jizo

Kaimori-sama

Kumano Hayatama Taisha Shrine

Sailing Route along the Kumano River with Scenic Views Pilgrimage Route on the River

About 15 kilometers 1 hour 30 minutes

The Kumano River has been registered on the UNESCO World Heritage List as a "Pilgrimage Route on the River." You can have a pilgrimage experience via this old sailing route with an amazing view of the Kurikyo Valley.



Sandanbo(three-masted river boat)

Hisetsu Falls

Tsuriganeishi

Senjigaeri

Hirujima Island

Mifunejima Island

Site of the former Ferry Port of Otomo

Kumano Hayatama Taisha Shrine

➡ ... On foot

➡ ... By boat

Set Out on A Trip to your Favorite Sites!

Fully Enjoy a Comfortable Trip at Your Own Pace.



A Lot of Attractive Events Are Held in Kiho Town!



The greatest event of Kiho Town!

Kiho Port Festival (held in mid-October)

10,000 people visit the festival every year.



Ki no Takara Minatoichi (held on the 2nd Saturday of every month)

This market is held at the Port of Udono to sell fish, vegetables, bento (boxed lunches) and many other local specialties of Kiho Town.



Hotaru Toro Lantern Festival (held in late May)

The site where this festival is held is magically illuminated by lots of hotaru toro (lanterns) painted by elementary school children in Kiho Town.



H-4 Udono Shrine

This shrine has a rare temperate forest that consists of a wide variety of wild plants including trees called ogatamanoki (*Michelia compressa*) that are known as common jays' favorite food.



H-4 Hokyointo (stone pagoda)

It was occasionally difficult for boats to sail smoothly on the Kumano River when its mouth was filled with sand. Hokyointo is a stone pagoda (with 3,000 stone sutras buried under it) that was built in prayer for safe sailing.



Let's Fully Enjoy Local Specialties of Kiho Town.



● Rice



Rice brands from Kiho Town, such as Aigamo Rice and Hisetsu Rice, are delicious and safe because they are grown with the use of fresh water from the Kii Mountains.

● Kihoume



Kihoume are additive-free, healthy pickled Japanese plums that are made by processing natural Nankobai plums (a type of Japanese apricots) grown in Kiho Town. They are also worth trying.

● Mandarin Oranges



Mandarin oranges grown in the Nanki area have a sweet and delicious flavor as well as a fine fragrance. They are available for delivery from Kiho Town throughout the year.

● Boiled Whitebait



A lot of whitebait (juvenile Japanese anchovy) can be caught in the Kumano Sea that Kiho Town faces. You should try them as healthy food containing enough calcium.

● Mehari Sushi



Mehari sushi is a local specialty of the Kishu area, which is composed of a rice ball rolled in takana leaves. People in the area often make it at home.

● Sanma Sushi



Sanma sushi is a type of sushi consists of a rice ball topped with a slice of saury caught in the Kumano Sea from autumn through winter. It is a local specialty of all the areas along the Kumano Sea.

● Additive-Free Brown Rice Vinegar



Brown rice vinegar from Kiho Town is made in a very traditional "natural brewing method" handed down through generations, which effectively helps rice ferment and ripen quite naturally. It is also worth trying.

● Nameko



Nameko are small, amber-brown mushrooms used as a sticky, easy-to-eat and delicious ingredient for expensive meals. You can fully enjoy the exquisite taste of nameko grown in the woods.

● Meyer Lemon



Meyer lemon is believed to be a cross between a true lemon and a mandarin orange. It is characterized by its fruity flavor and juiciness. The Kinan area is the largest producer of Meyer lemons in Japan.



Contact Kiho Town Commerce and Industry Association for further information.
Phone: 0735-21-6475

We recommend them for presents for someone as well as for souvenirs for yourself.

Everybody will be happy with those excellent products!



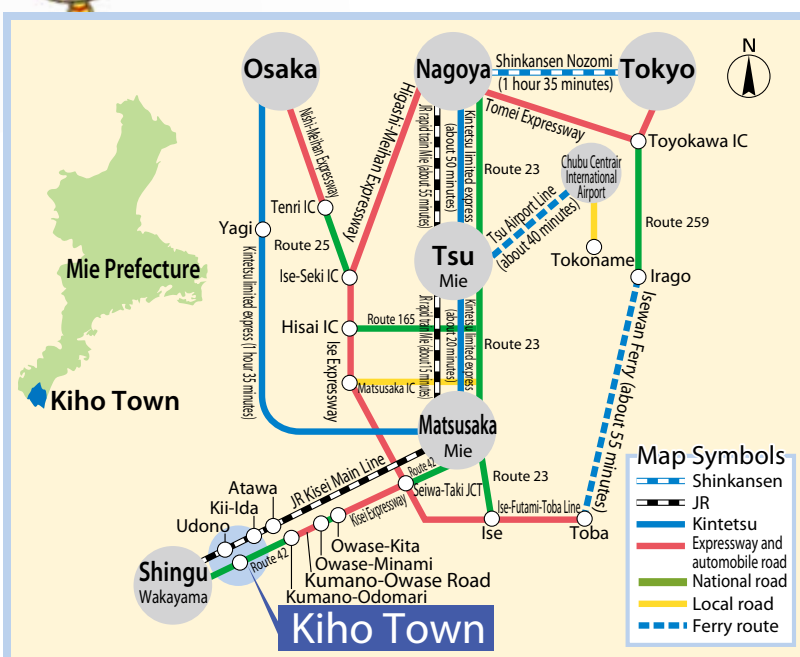
Access Guide

By Car

About 30 minutes from Kumano-Odomari Interchange (IC) on Kumano-Owase Road
※From the interchange, drive in the direction of Shingu via Route 42.

By Train and Bus

10 minutes by bus for Omata-Okubo Bus Stop on the Kumano-Shingu Line from JR Shingu Station



Kiho Town Planning and Coordination Division
<http://www.town.kiho.lg.jp/>

324 Udono, Kiho Town, Minamimuro County, Mie Prefecture 519-5701
Phone: 0735-33-0334 Fax: 0735-32-1102